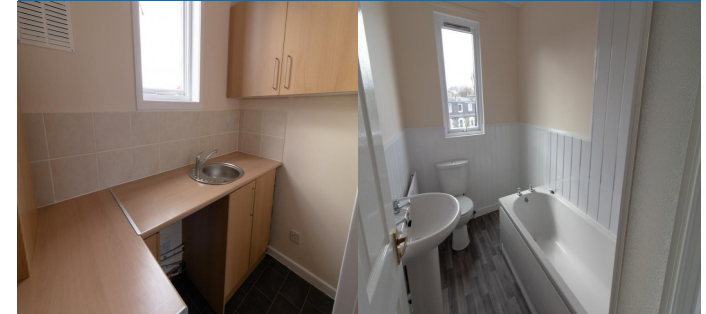


BOURTREE TERRACE, HAWICK, TD9 9HN



We have 2 x 1 bedroom flats available in the residential area of Hawick. Ideal investments these are in a residential area close to all amenities.

6B - 1 bedroom ground floor flat
6D - 1 bedroom ground floor flat

Valuation Report available on request

RICS Valuation	£35,000
Discount	22.5% (£7,875)
Purchase price	£27,125
Deposit @ 7.5%	£2,625
Rent	£350 per month
Yield	15.48%
Lender fee	£4,430

5 Year Rent Guarantee

The associated lender fees has been estimated as accurately as possible and include: Lender's completion fee, mortgage broker fees, valuation fee, lender's legal fees and purchaser's own legal fees.
The lender fee does not include your deposit or our consultancy fee.